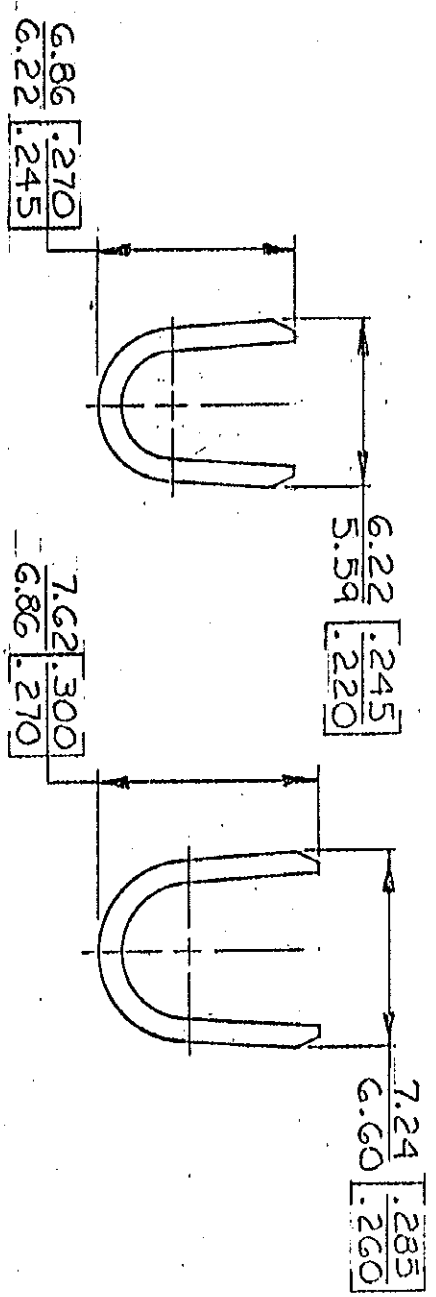
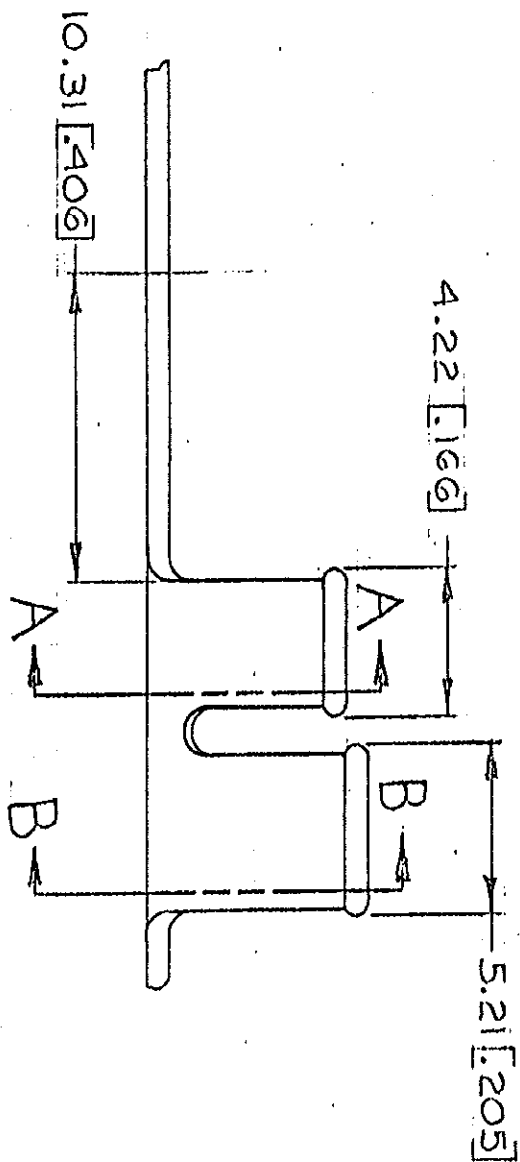
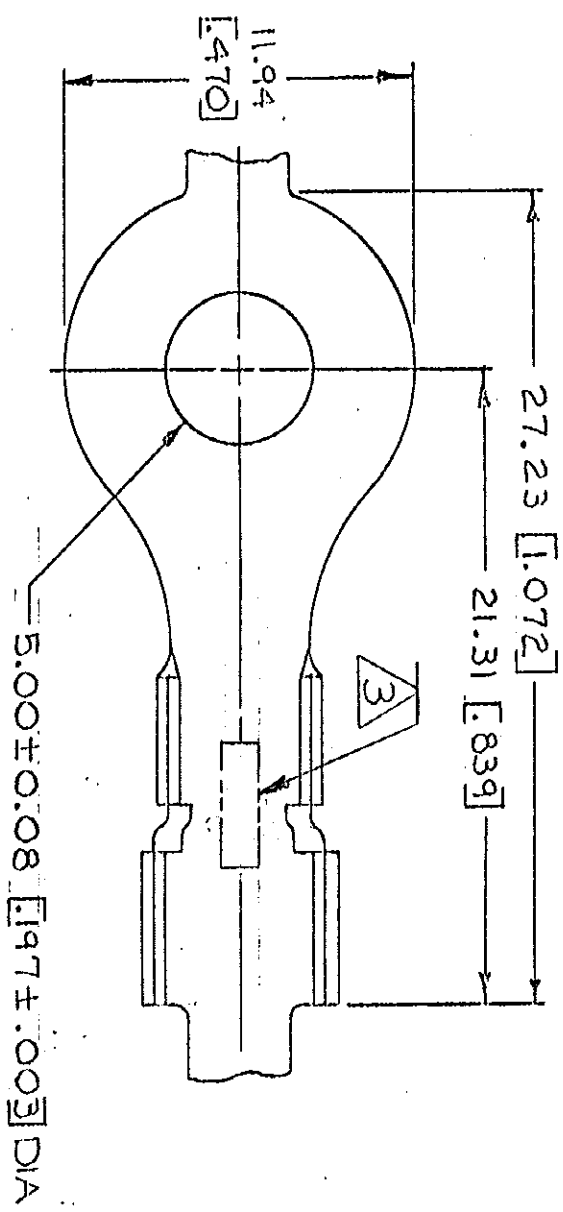


DRAWING MADE IN THIRD ANGLE PROJECTION

© COPYRIGHT 1963 BY AMP INCORPORATED, HARRISBURG, PA.
 ALL INTERNATIONAL RIGHTS RESERVED. AMP INCORPORATED PRODUCTS
 COVERED BY U. S. AND FOREIGN PATENTS AND/OR PATENTS PENDING.



		REVISIONS				
P	F	ZONE	LTR	DESCRIPTION	DATE	APPROVED
✓	✓		H	REDRAWN REVISIONED R-3943	5-1-78	D. S.
✓	✓		J	REV PER AF-7197	1/22/79	PAF/64
✓	✓		K	REV PER AF-7262	2/18/81	PAF/64
✓	✓		L	ADD -1 PER 0247-93	8/2/93	PAF/64

- 1. CONTINUOUS STRIPON REELS
- 2. DIMENSIONS IN BRACKETS
- 3. ARE IN INCHES.

STAMPING: AMP FOR 41124
 AMP FOR 41124-1

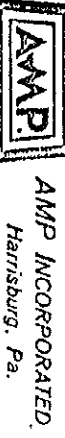
METRIC

SECT A-A

SECT B-B

UNLESS OTHERWISE SPECIFIED DIMENSIONS ARE IN INCHES. TOLERANCES DECIMALS ±0.35 [0.15] ANGLES 1°	CONTRACT NO.	FINISH	SEE TABLE
STUD SIZE #10	3.0-6.0 mm [12-10]	WIRE RANGE	3.81-5.33 [150-.210]
INSULATION RANGE		FINISH	TIN
MATERIAL	SEE TABLE	MATERIAL	0.76 [030] PH05 BRZ
DR. <i>[Signature]</i>	APPD. <i>[Signature]</i>	NAME	AMP INCORPORATED
CHK. <i>[Signature]</i>	APPD. <i>[Signature]</i>	SIZE	B
DR. <i>[Signature]</i>	APPD. <i>[Signature]</i>	CODE IDENT NO.	00779
CHK. <i>[Signature]</i>	APPD. <i>[Signature]</i>	DRAWING NO.	41124
DR. <i>[Signature]</i>	APPD. <i>[Signature]</i>	SCALE	
CHK. <i>[Signature]</i>	APPD. <i>[Signature]</i>	SHEET	

RING



AMP INCORPORATED
 Harrisburg, Pa.

41124-1

CUSTOMER DRAWING

AMP 1270-15 (7-73)